

## Maranda Williams

---

**From:** Craig Erickson <cerickson@greatwesteng.com>  
**Sent:** Monday, April 14, 2025 11:03 AM  
**To:** Blanche McLure; Maranda Williams  
**Cc:** Jeremiah Theys; Craig Erickson  
**Subject:** Flint Creek Dam - Reclamation and Development Planning Grant

Good morning,

We want to start work on Granite County's application for a \$75,000 Reclamation and Development Grant Program (RDG) planning grant to finance the preparation of a **Part 12D Report** for Flint Creek Dam.

The Montana DNRC requires the submittal of RDG planning grant applications through the Submittable Grants portal at <https://dnrc.mt.gov/Conservation/Grant-and-Loan-Programs/Reclamation-and-Development-Grants/RDG-Planning-Grants>

Please identify me and Jeremiah as Collaborators so we can prepare and revise your online application. To start the process, follow the steps described below:

Step 1: Click the **\*\*Apply Now\*\*** link and respond to the questions on page 1.



## About

The Reclamation and Development Grants Program (RDGP) Planning Grants are state-funded grants designed to fund projects that help plan and develop RDGP Project Grants. The program funds reclamation projects that repair, reclaim, and mitigate environmental damage to public resources from non-renewable resource extraction and crucial state need projects that prevent or eliminate severe and unacceptable damage to natural resources or capture extraordinary public benefit that would otherwise be lost.

### Current Grant Cycles

Applications accepted until April 25, 2025

APPLY NOW

Step 2: At the top right-hand corner of the second page (see the following screenshot), click on the **\*\*Manage Collaborators\*\*** link, enter my email address, [cerickson@greatwesteng.com](mailto:cerickson@greatwesteng.com), and Jeremiah's email address, [jtheys@greatwesteng.com](mailto:jtheys@greatwesteng.com), then close the application.

We will receive an email with a link to access the application and respond to each question.



 [Manage Collaborators](#)

## Instructions:

This application **must** be submitted by someone within the applying entity (local government - city, county, conservation district, etc.).

You can add additional people to your project by adding a collaborator. [This video](#) will show you how to add a collaborator.

[Program Guidance](#), [Application Instructions](#), and all other application material are available on the [DNRC Planning Grants page](#).

If you have any questions, please get in touch with me at (406) 399-0104.



**We're Hiring!**

### **Craig Erickson, CGW**

Senior Funding Specialist

**d:** (406) 495-6189

**c:** (406) 399-0104

2501 Belt View Drive  
Helena, MT 59601

This message has been sent to you as the official business of Great West Engineering. This e-mail and any attachments may be considered confidential. If you are not the intended recipient, please be advised that you are legally prohibited from retaining, using, copying, distributing, or disclosing this information. If you have received this communication in error, please reply to the sender and then immediately delete it. I appreciate your cooperation.



U.S. Department  
of Transportation  
**Federal Aviation  
Administration**

Northwest Mountain Region  
Colorado · Idaho · Montana · Oregon · Utah  
Washington · Wyoming

Helena Airports District Office  
2725 Skyway Dr., Suite 2  
Helena, MT 59602

April 2, 2025

The Honorable Blanche McLure, Chairperson  
Granite County Commission  
220 N Sansome Street  
PO Box 925  
Philipsburg, MT 59858

**Grant Closeout Letter**  
**AIP: 3-30-0058-004-2021**  
**Riddick Field**  
**Philipsburg, Montana**  
**Grant Closeout Date: 04/02/2025**  
**Grant Review Case Number: ANM-25-2051**  
**Final grant amount: \$278,600**

Dear Commissioner McLure:

This notice of grant closeout is based on the following conditions having been met: (1) all work included in the project description has been satisfactorily completed, (2) there are no outstanding grant special conditions, (3) all project costs reimbursed by FAA under this grant have been determined to be reasonable, eligible and allowable, and (4) the sponsor has complied with all terms and conditions of the grant agreement.

Final payment has been made and all administrative requirements are satisfied. A final cost review of the grant has been completed and the final costs were determined to be reasonable and justified. There are no differences in the amount of funds requested by the sponsor and the amounts paid out. If an audit reveals any issues, this grant will be re-opened until the outstanding issues have been resolved.

Please be advised that in accordance with 2 CFR 200.333, you are required to retain all supporting project documentation for a minimum period of three years from the date of the final request for reimbursement. Because most grant obligations extend beyond three years, we strongly encourage you to retain grant documentation for the life of the grant obligations.

Sincerely,

Joe Nye, Assistant Manager  
Helena ADO

Cc: via email  
AMK-314  
AMM-613  
Nathan Schroht, KLJ Engineering  
Karen Hallenbeck, Montana Aeronautics Division  
Stephen Torske, Montana Aeronautics Division





# Field Observation Report

Granite County Courthouse Elevator / 18  
Mar 2025

Complete

<b>Actions</b>	0
<b>Conducted on</b>	18.03.2025 11:26 MDT
<b>Project No. - Name</b>	Granite County Courthouse Elevator
<b>Location</b>	220 N Sansome St, Philipsburg, MT 59858, USA (46.3335157000001, -113.293449)
<b>Inspection Person</b>	Scott Cromwell
<b>Owner</b>	Granite County
<b>Contractor</b>	TCS Northwest
<b>Work In Progress</b>	Elevator pit and shaft construction is underway. Women's restroom is nearing completion. Miscellaneous items remain.

## Field Observation

Weather & Details

### Present at Site:

Architect

Owner

Contractor

### Temperature:

55  
From -40 to 110

### Weather:

Snow

Observations

Observations 1

### Observation Item

Elevator pit slab placement has started with the front half.

### Photos



Photo 1



Photo 2

Observations 2

### Observation Item

Elevator pump room ready for Otis' equipment.

### Photos



Photo 3



Photo 4



Photo 5



Photo 6

Observations 3

### Observation Item

Judges Restroom 202

### Photos

Door trim and tile + window trim remains

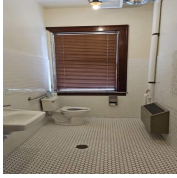


Photo 7



Photo 8



Photo 9



Photo 10

#### Observations 4

#### Observation Item

Women's Restroom 204

#### Photos

Final fit and finish is underway. Waiting on toilet partitions and wood door framing to finish. Will need to figure out a cover for the drain pipe at the floor/wall connection under the sinks. There is existing floor unevenness at the single toilet wall to the right of the sink. The flooring sub did smooth it out but hoping to make it less noticeable.



Photo 11



Photo 12



Photo 13

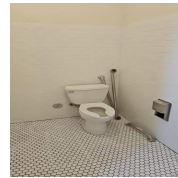


Photo 14

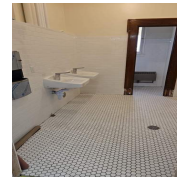


Photo 15

#### Observations 5

#### Observation Item

Janitor Closet 205

Mostly complete except for doors and final trim.



Photo 16

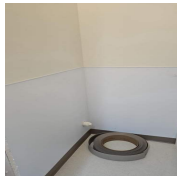


Photo 17

#### Observations 6

#### Observation Item

Men's Restroom 207

Patch holes in wall above urinals. This room is complete.

#### Photos



Photo 18

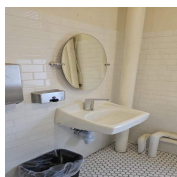


Photo 19

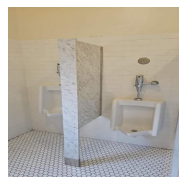


Photo 20

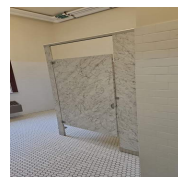


Photo 21

#### Observations 7

#### Observation Item

Jury Restroom 302

---

## Photos

Waiting on doors to final trim out the room.



Photo 22



Photo 23

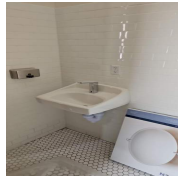


Photo 24

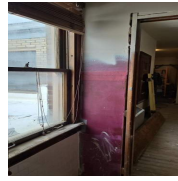


Photo 25

Observations 8

---

**Observation Item**

Jury Room 301

## Photos

Waiting on doors and trim to finalize.

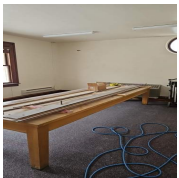


Photo 26



Photo 27

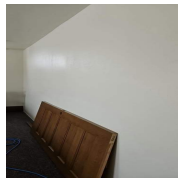


Photo 28

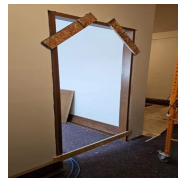


Photo 29



Photo 30

Observations 9

---

**Observation Item**

Roof drain is in place and complete.

## Photos

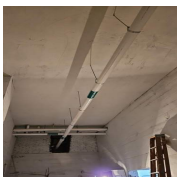


Photo 31

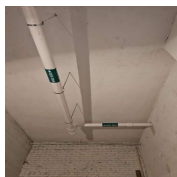


Photo 32



## Media summary



Photo 1



Photo 2



Photo 3



Photo 4



Photo 5



Photo 6



Photo 7



Photo 8



Photo 9



Photo 10



Photo 11



Photo 12



Photo 13



Photo 14



Photo 15



Photo 16



Photo 17



Photo 18



Photo 19



Photo 20



Photo 21



Photo 22



Photo 23



Photo 24



Photo 25



Photo 26



Photo 27

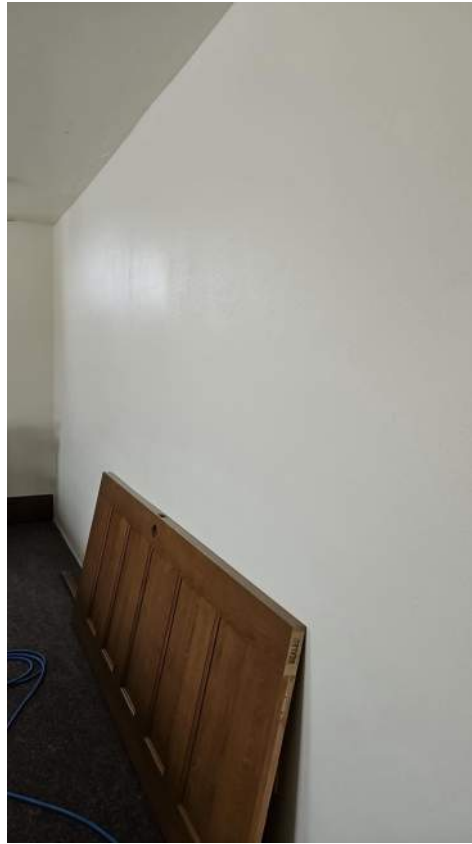


Photo 28



Photo 29



Photo 30



Photo 31



Photo 32